

COMPASS

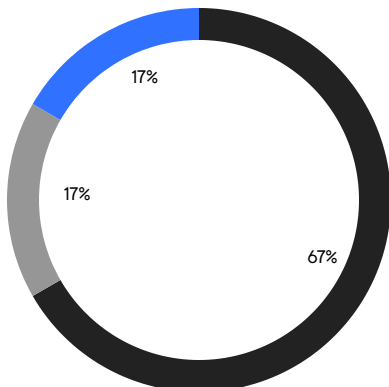
QUEENS WEEKLY LUXURY REPORT



3 COURT SQUARE, UNIT PH202

RESIDENTIAL CONTRACTS
\$1.25 MILLION AND UP

- NORTHEASTERN QUEENS
- CENTRAL QUEENS
- NORTHWESTERN QUEENS



6

CONTRACTS SIGNED
THIS WEEK

\$10,053,000

TOTAL CONTRACT VOLUME

The Queens luxury real estate market, defined as all properties priced \$1.25M and above, saw 6 contracts signed this week, made up of 2 condos, and 4 houses. The previous week saw 5 deals. For more information or data, please reach out to a Compass agent.

\$1,675,500

AVERAGE ASKING PRICE

\$1,639,000

MEDIAN ASKING PRICE

\$835

AVERAGE PPSF

0%

AVERAGE DISCOUNT

\$10,053,000

TOTAL VOLUME

66

AVERAGE DAYS ON MARKET

33-23 161st Street in Flushing entered contract this week, with a last asking price of \$2,388,000. Built in 2007, this single-family house spans approximately 4,500 square feet with 4 beds and 4 full baths. It features concrete and steel structural elements, dual kitchens, open-concept living spaces, a basement with radiant heated floors, abundant storage and closet space, and much more.

Also signed this week was Unit 11R at 133-27 39th Avenue in Flushing, with a last asking price of \$1,790,000. Built in 2016, this condo unit spans 1,614 square feet with 3 beds and 3 full baths. It features floor-to-ceiling windows, central HVAC, a gourmet kitchen with high-end appliances, high ceilings, walk-in closets, and much more. The building provides a live-in super and concierge, a rooftop tennis court and two large gyms, a sauna, a library, and many other amenities.

2

CONDO DEAL(S)

0

CO-OP DEAL(S)

4

TOWNHOUSE DEAL(S)

\$1,544,500

AVERAGE ASKING PRICE

\$0

AVERAGE ASKING PRICE

\$1,741,000

AVERAGE ASKING PRICE

\$1,544,500

MEDIAN ASKING PRICE

\$0

MEDIAN ASKING PRICE

\$1,639,000

MEDIAN ASKING PRICE

\$1,303

AVERAGE PPSF

\$600

AVERAGE PPSF

1,241

AVERAGE SQFT

3,032

AVERAGE SQFT



33-23 161ST ST

Flushing

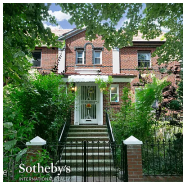
TYPE	TOWNHOUSE	STATUS	CONTRACT	ASK	\$2,388,000	INITIAL	\$2,388,000
SQFT	4,500	PPSF	\$531	BEDS	4	BATHS	4.5
FEES	\$1,212	DOM	38				



133-27 39TH AVE #11R

Flushing

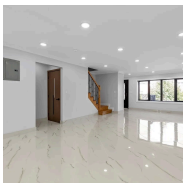
TYPE	CONDO	STATUS	CONTRACT	ASK	\$1,790,000	INITIAL	\$1,790,000
SQFT	1,614	PPSF	\$1,109	BEDS	3	BATHS	3
FEES	\$607	DOM	127				



98-03 69TH AVE

Forest Hills

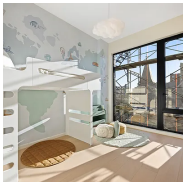
TYPE	TOWNHOUSE	STATUS	CONTRACT	ASK	\$1,679,000	INITIAL	\$1,679,000
SQFT	2,620	PPSF	\$641	BEDS	4	BATHS	3
FEES	\$1,098	DOM	17				



150-38 77TH AVE

Kew Gardens Hills

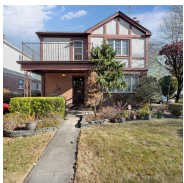
TYPE	TOWNHOUSE	STATUS	CONTRACT	ASK	\$1,599,000	INITIAL	\$1,599,000
SQFT	3,240	PPSF	\$494	BEDS	5	BATHS	4.5
FEES	\$553	DOM	65				



31-16 21ST ST #PH2C

Astoria

TYPE	CONDO	STATUS	CONTRACT	ASK	\$1,299,000	INITIAL	\$1,299,000
SQFT	868	PPSF	\$1,497	BEDS	2	BATHS	2
FEES	\$1,157	DOM	118				



76-53 168TH ST

Hillcrest

TYPE	TOWNHOUSE	STATUS	CONTRACT	ASK	\$1,298,000	INITIAL	\$1,298,000
SQFT	1,768	PPSF	\$734	BEDS	3	BATHS	2.5
FEES	\$817	DOM	27				

Compass is a licensed real estate broker and abides by Equal Housing Opportunity laws. All material presented herein is intended for informational purposes only. Information is compiled from sources deemed reliable but is subject to errors, omissions, changes in price, condition, sale, or withdrawal without notice. No statement is made as to the accuracy of any description. All measurements and square footages are approximate. This is not intended to solicit property already listed. Nothing herein shall be construed as legal, accounting or other professional advice outside the realm of real estate brokerage.